

Epistaxis

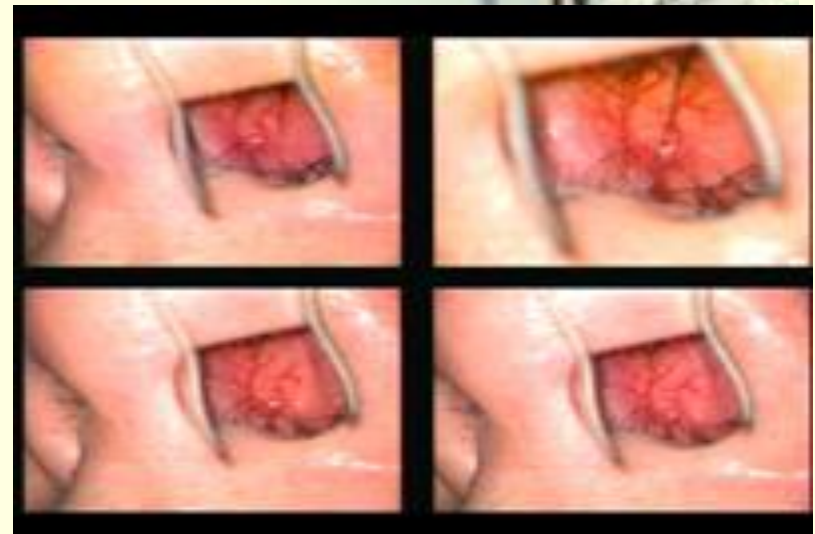
Presented by

Ahmed Said El Nahas

Lecture of ENT Sohag University

Clinical Presentation

- Site: from little`s area, IT, above MT from ant.eth.a.
- Varies from trivial to lethal
- Usually from ant.nares or postnasal into pharynx.
- Examination.... Should include local and general



Causes

- **Local Causes:**

- Idiopathic. - Traumatic.
- Inflammatory. - Neoplastic..... NP Angiofibroma.
- Environmental.... High altitudes.

- **General causes:**

- High arterial BP. - High venous pressure.
- Coagulation disorders.....cong. or acquired (liver dis.)
- Haemopoietic..... leukaemia.
- Endocrine... pregnancy.

Treatment

- First aid measures.
- Cauterization.
- Packing of nose.
- Arterial ligation.
- Embolisation



Treatment Con.

